

TURBO KIT

2021 Can-Am X3 R Models

PARTS LIST

×

- | | | | |
|---|--------------------|---|------------------|
| 1 | TURBO ASSEMBLY | 3 | 7/32" HOSE CLAMP |
| 1 | WASTEGATE ACTUATOR | 1 | 5/8" HOSE CLAMP |
| 1 | INTAKE TUBE | 1 | 7/16" HOSE CLAMP |
| 1 | GASKET | 1 | 9/16" HOSE CLAMP |
| 1 | 3/4" BARB FITTING | 1 | 2" HOSE CLAMP |

PLEASE READ ALL DIRECTIONS BEFORE STARTING INSTALLATION.

×

96010012.01

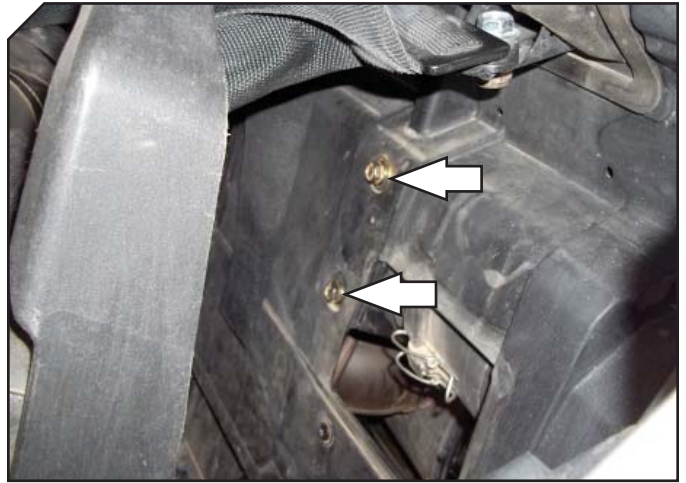
AMERICAN

INSTALLATION INSTRUCTIONS

Refer to the service manual for detailed instructions on how to remove the stock turbo assembly.

You will need to remove:

- Seats
- Access panel behind seats
- Heat shields
- Intake tube
- Air box
- Turbo assembly



REMOVE AIR BOX BOLTS

Remove the clutch cover intake hose.

Loosen the clamp for the air box intake hose.

Remove the air box assembly.

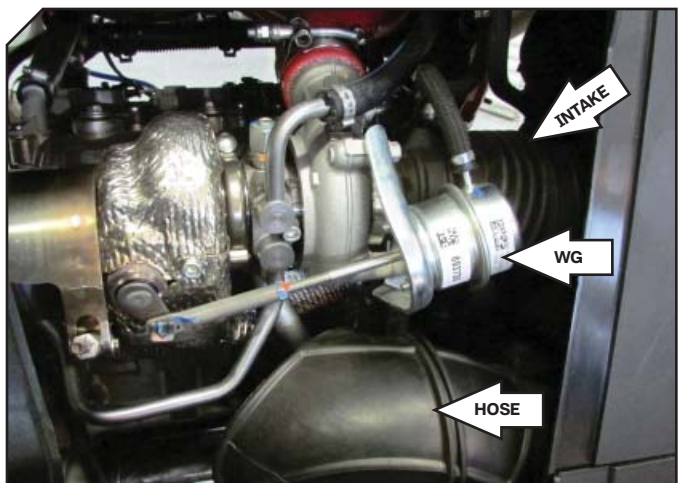


REMOVE AIR BOX

Remove the stock wastegate and bracket.
The stock bracket and hardware will be reused.

Remove the clutch cover intake hose.

Remove the intake tube from the turbo.

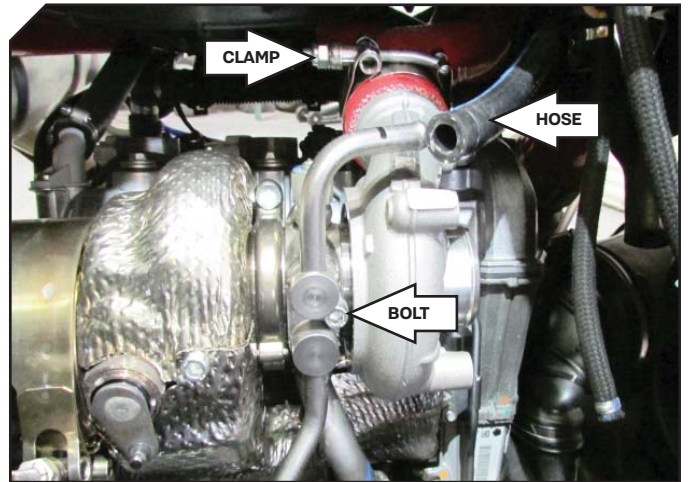


REMOVE WASTEGATE AND HOSES

INSTALLATION INSTRUCTIONS

Clamp the coolant hose to keep the coolant from draining. Remove the coolant line from the turbo by removing the bolt and nut retaining the line in place. You will need to cut the clamp to remove the hose. See the next image for location of the nut.

Loosen the clamp for the charge tube.

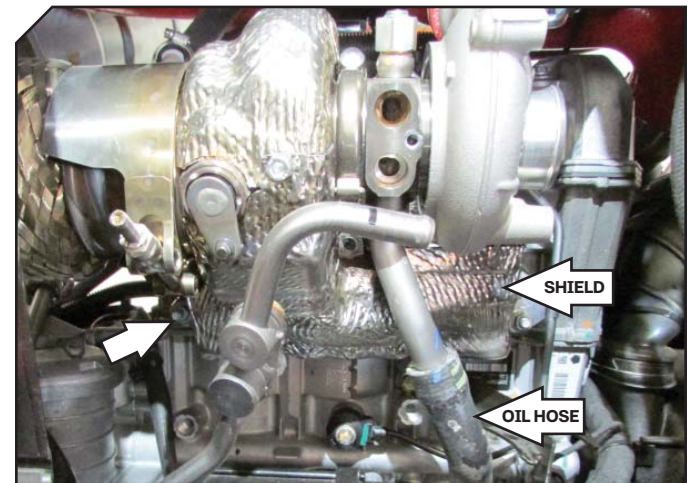


REMOVE COOLANT HOSE

Remove the oil drain hose. You will need to cut the clamp to remove the hose.

The arrow on the left side of this image indicates the location of the nut that needs to be removed for the coolant drain hose from previous step.

Remove the lower heat shield. There are three screws holding it in place.

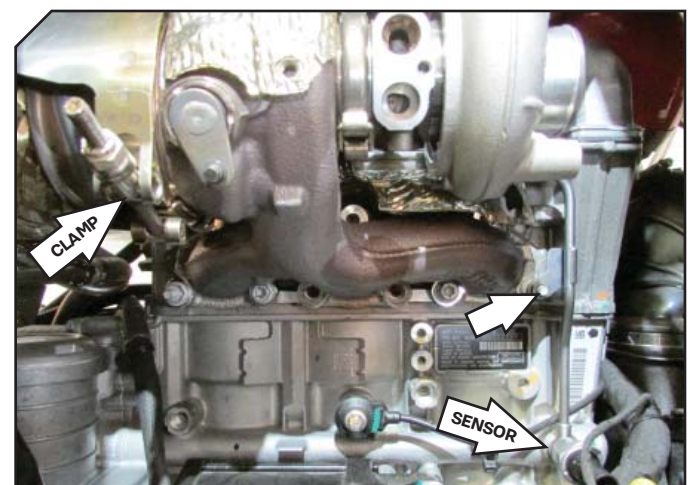


REMOVE OIL DRAIN HOSE

Remove the oil pressure sensor and hard oil line.

Loosen the V-band clamp holding the exhaust to the turbo.

Remove the nine bolts holding the exhaust manifold in place and remove the stock turbo.



REMOVE STOCK TURBO

INSTALLATION INSTRUCTIONS

With the stock turbo removed, remove the stock heat shield and install on the new turbo.

Remove the oil drain tube from the stock turbo and install on the new turbo.

Using the supplied gasket, install the new turbo onto the engine.



INSTALL HEAT SHIELD

Install the Dynojet intake tube onto the turbo using the existing clamp.

Install the air box using the existing clamp.

Connect the crankcase breather hose to the Dynojet tube using the supplied barb fitting and stock clamp.



INSTALL CRANKCASE HOSE

Use the stock bracket and hardware to mount the wastegate actuator to the turbo.

It is recommended to check the crack pressure of the wastegate which should be set to 10psi. Refer to this video if needed - <https://www.youtube.com/watch?v=5TEDJaH4NxU>

Reconnect all hoses and lines using the supplied clamps.

Check coolant and oil levels before starting vehicle.



INSTALL WASTEGATE ACTUATOR



PUSH THE LIMIT

2191 MENDENHALL DRIVE, NORTH LAS VEGAS, NV 89081 - 800-992-4993 - DYNOJET.COM

© 2021 DYNOJET RESEARCH ALL RIGHTS RESERVED