



FMINLD2 Fitting Instructions



Please thoroughly read through and familiarise yourself with these instructions in their entirety prior to beginning any part of the installation process of any component. Please also ensure the vehicle and engine has cooled down sufficiently to avoid risking possible skin burns or other injury.

TOOLS NEEDED:

T30 and suitable drive

Flat blade screwdriver/ Trim tool

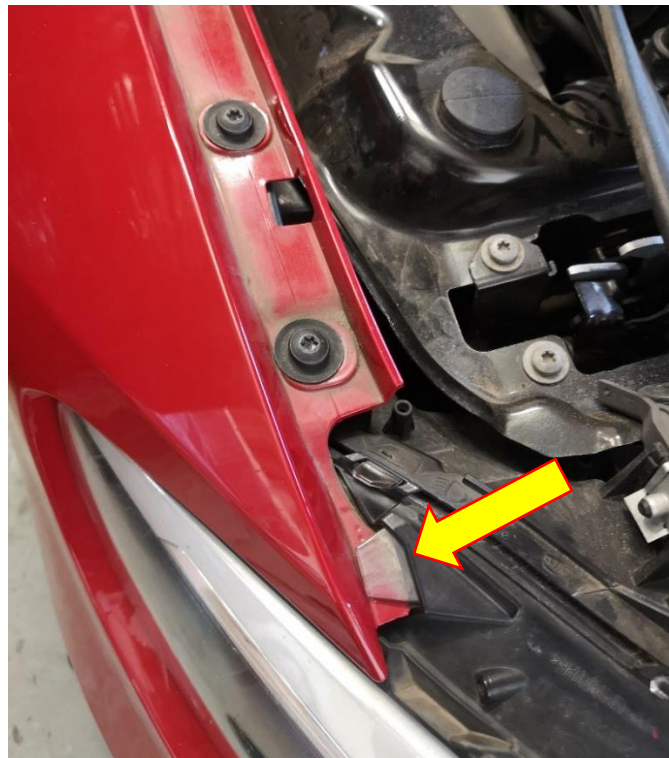
Flush face cutters

NOTE: AN M140i WAS USED FOR THESE INSTRUCTIONS, HOWEVER THE PROCESS WILL BE THE SAME ACROSS THE F CHASSIS.

1. Open the bonnet and pull back the weatherstrip to access the bolts on top of the bumper.

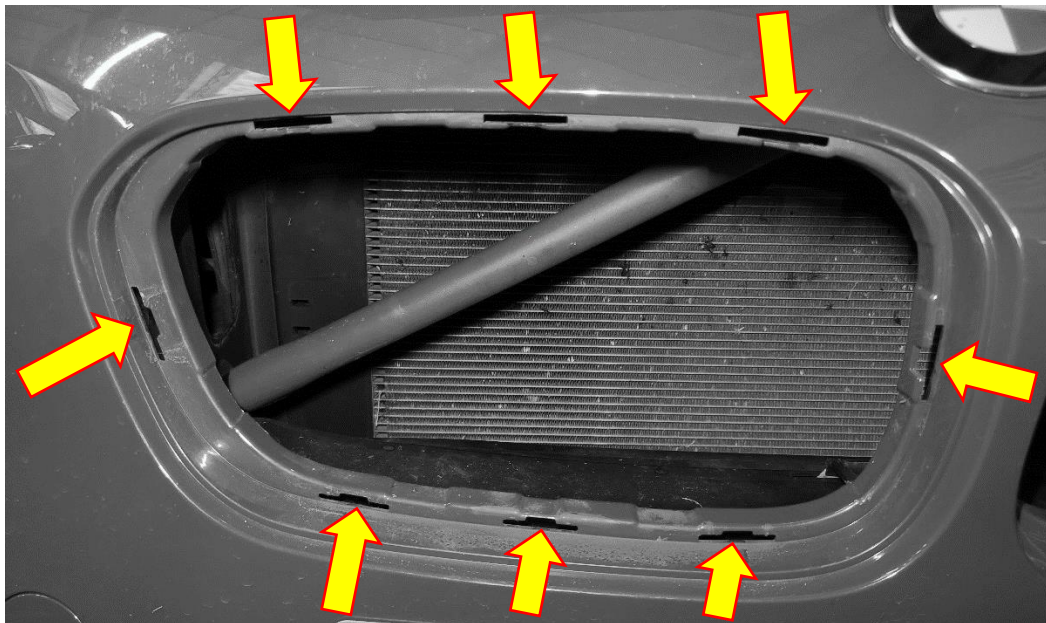


2. Using a T30, undo and remove the x6 bolts. You can then pull the bumper gently towards you to release it from x4 catches that locate it.





3. If you have purchased a matching pair of inlet ducts, remove one kidney grill at a time, as you can then access the other through the opening.
4. Please use the below image for reference on the location of the 8 tabs which hold the kidney grill in place.



5. With the bumper now slightly loose at the top, gently pull it towards you to gain access to the top clips that hold the kidney grills in place. Depress the centre of the tab **downwards**, then **push** the clip so that it slides under the bumper (therefore releasing it).
There are three clips at the top to release.



6. Gently pull the top of the kidney grill towards you by gripping the surround NOT the slats.

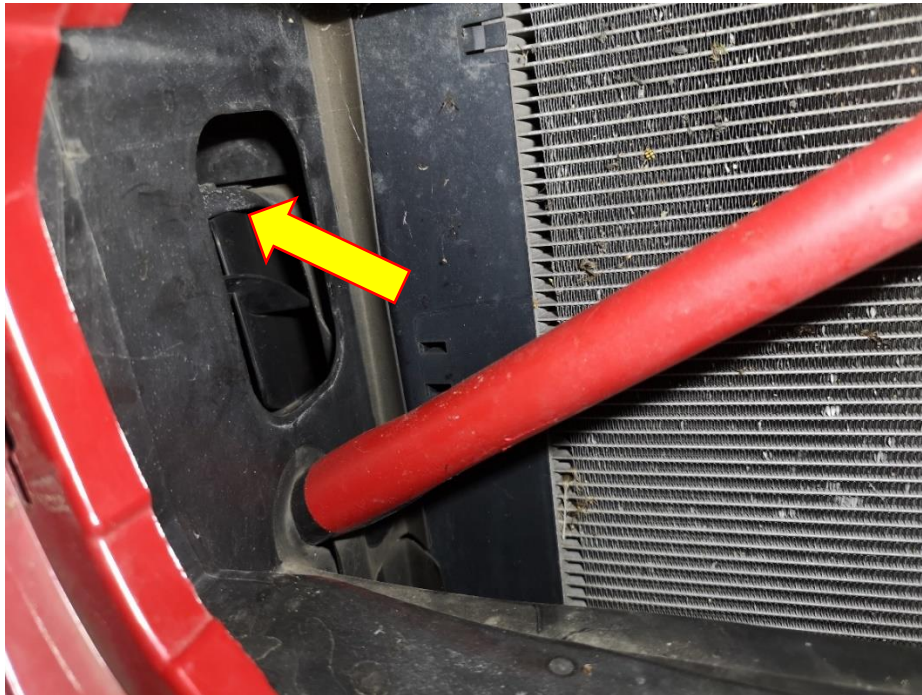


7. Slide your hand in between the final few slats on either the left or right side of the kidney grill and reach for the singular tab on the side. Depress the centre of the tab in the same way as the previous step, and then use your other hand to gently pull the kidney grill surround towards you to release. Repeat this for the other side of the same kidney grill.



8. To release the final 3 tabs along the bottom, reach your hand through the slats and use your finger to depress the centre of the tab in the same method as previously used, again gently pull on the kidney grill surround to release it. Repeat this until all three are loose, then you can pull the whole kidney grill towards you to remove it.

9. Regardless of what side you are replacing, from the factory BMW will either leave a blank or mesh plastic cover clipped to the opening. This needs to be removed.



10. Clean the support bar, and around both sides of the opening with water only, ensuring it is clean will help the double-sided tape to adhere properly.
11. Taking the supplied double-sided tape, apply it to the area shown in the image below using the same orientation.



12. Feed 2 of the supplied cable ties through FMINLD2 as shown below. At this point it is worth lining up FMINLD2 on the vehicle to see how it fits up before you remove the backing from the double-sided tape. You want the long straight edge to be vertical, so it lines up with the slats in the kidney grill.



13. Remove the backing off the double-sided tape. Line up FMINLD2 inside the opening, with the cable ties going around the support bar. Hook the end of FMINLD2 around the corner of the opening and push firmly for 30 seconds to ensure good adhesion.



14. Tighten the cable tie firmly to secure FMINLD2 and use flush face cutters to remove excess.



15. If you have purchased a matching pair, use the opening of the removed kidney grill to reach through and unclip the other sides grill. Then use steps 9-14 to secure the matching FMINLD2.
16. Once you are happy with the installation, use steps 1-8 in reverse to put your BMW back together.
17. Have a final spanner check, and then take the vehicle for a test drive enjoying your new Forge Motorsport product.

Check out www.forgemotorsport.co.uk
and www.forgemotorsport.com
For a full range of performance products for your vehicle.

*If you have any questions or concerns about this product
or anything else, please feel free to contact your local or preferred
Forge Motorsport Dealer/Installer or you may contact us directly.*

Forge Motorsport UK (+44)1452 380999
Forge Motorsport USA (407)-447-5363
Forge Motorsport ASIA +886-4-22516887

info@forgemotorsport.co.uk
sales@forgemotorsport.com
sales@forgemotorsport.asia

