

Step 1 - Remove Shifter + OE Bracket

Remove OE or aftermarket shifter from the tunnel.

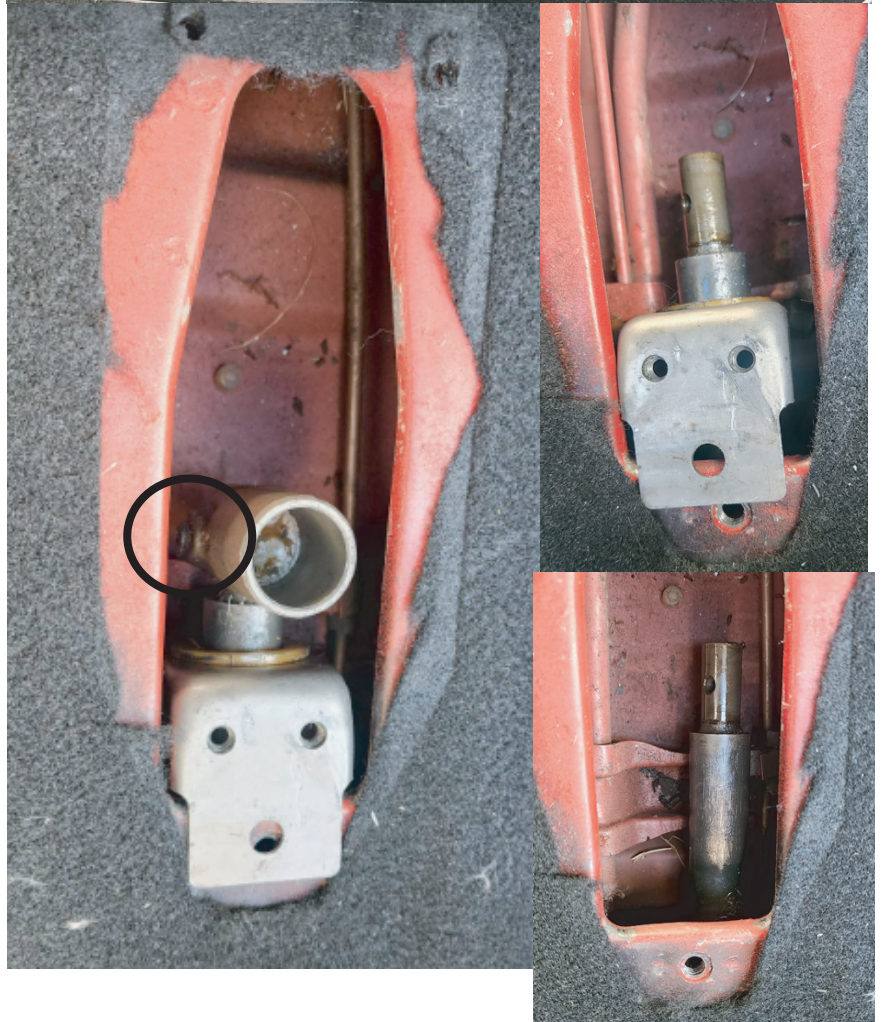
There are a total of 5 bolts securing the shifter down.



With the shifter removed, remove the shifter cup (also referred to as the shift rod head) from the tailshaft.

There is a hex (allen) screw that threads in to the side of this cup. This can be tricky to remove because of the tunnel clearance. The rear coupling can be loosened to allow enough rotation to remove this part.

With this ball cup removed you can slide the OE bracket from the tailshaft.



Step 2 - Re-installation

Before installation of the new shift support bracket it is recommended to add a lithium based grease to the bushing. This will insure the smoothest operation.

The upgraded bushing has a grease slot to allow over time additional grease to draw in to the bushing.

Place the slot in the top position and apply an excess amount of grease in the groove. Over time the grease will work onto the tailshaft to provide long term lubrication.

Reinstall the shifter bracket in the same orientation as the stock bracket.

Reinstall the shifter to complete this installation.

NOTE- If you loosened the rear shifter coupler the shifter will need to be readjusted.



Step 3 – Bushing Replacement

This support bracket accepts both Rennline TR16 bushing upgrade as well as the OE bushing.

When a bushing replacement is needed remove the TR16 bushing by compressing the tail of the bushing and push through. In the event of a replacement, tools can be used to remove the worn bushing.

INSTALLATION

TR16 – Similar to removal, compress the two sides of the bushing and push through the bracket. There is a groove that the part should snap in to and secure.

OE BUSHING –

When installing the OE bushing it is recommended to soak the bushing in warm water to make the part pliable enough for installation.
A light lubrication can be used for installation.

On the back of the TR17 bracket there is a section that is chamfered. This chamfer is to allow the bushing to roll in to the bracket. Push the bushing in at an angle to fully install.

