

Installation Manual For Audi RS6/RS7-(C8)



For Audi RS6/RS7-(C8)

- iPE would like to congratulate you on your purchase of the exhaust system of Audi RS6 & RS7 - (C8).
- Valvetronic Sound technology, superior build qualities, and use of material make our exhaust system an industry leader. We would like you to enjoy your exhaust system with this installation manual.
- Please read this installation manual carefully before proceeding with installation of the iPE exhaust system. Installing an exhaust system does require some tools and experience. Since some parts of the system are related with electrical connections, certain level of skills is required in order for the complete system to work properly. If you have any doubts about the installation procedure, we recommend that you talk with your dealer for further assistance. Improper installation can void your warranty. By reading this installation guide and installing the exhaust system, you have agreed to the terms and conditions stated in this manual.
- Any questions or comments, please do not hesitate to contact us.

iPE HEADQUARTERS

+886 2 27711997 / www.ipe-f1.com / info@ipe-f1.com

- Please make sure the car is lifted properly. If you fail to do so, you risk suffering vehicle damage and personal injury including death. Make sure that the car is lifted on the proper lifting point.
- Exhaust system creates very high temperature; therefore, before doing any work on the exhaust, please allow time for the vehicle to cool down or wear protective items such as gloves to prevent injury before starting the installation process.
- Be careful not to strip or break nuts and bolts when loosening them and while installing, please torque the bolts to the correct specifications to prevent mechanical issues from occurring.
- With our Valvetronic system, iPE recommend 60% throttle opening for valve actuation to prevent excess resonance with exhaust sound.
- It is normal for white smoke to be visible on the first start. The smoke will dissipate after the exhaust reaches working temperature.
- For personal safety, please do not stand directly in front of the exhaust on first start because the muffler is not yet active and some manufacturing debris might exit the exhaust and cause injury.
- Our exhaust system requires a break in period and the sound and tone might change after the break in period. Normally this will take place at around 300 miles or about 500 km.
- Be ready to enjoy the performance and sound of exhaust system.



Catback system	x 1	Tips	x 4
Catpipe	x 2	Valve Remote Control Set	x 1

Tools Required

Flathead Screwdriver	Torx Screwdriver
Hex Socket Set	Torx Socket
Penetrating Fluid (Anti-Rusting Oil)	Open And Hex Wrenches
Philips Screwdriver	Ratchet Wrench With Sockets
Torque Wrench	

- With the engine shut off and the car on the lift, please unplug the wiring harness from the valve actuation motors.

- Removal of the stock exhaust

A-1.

Remove in the following order: under covers and frame support bars

- After the screws are removed, place them neatly and in an organized manner to avoid confusion when reinstalling them later.

A-2.

Remove in the following order: under two frame support bars

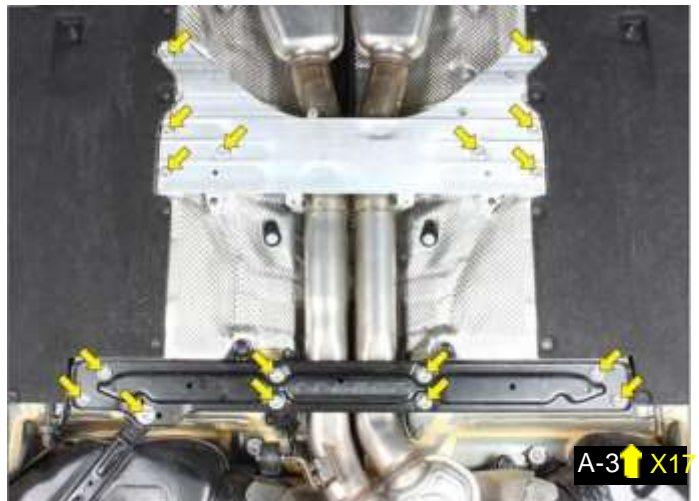
- After the screws are removed, place them neatly and in an organized manner to avoid confusion when reinstalling them later.

A-3

Unscrew the nuts: unscrew the middle chassis support and the sway bar.

- After the screws are removed, place them neatly and in an organized manner to avoid confusion when reinstalling them later.

Caution: Ensure that the car is lifted properly to prevent the risk of vehicle damage, injury, or even death. Please allow time for the exhaust to cool down or wear protective material to avoid injury.



A-4
Please use a jack to hold the transmission.



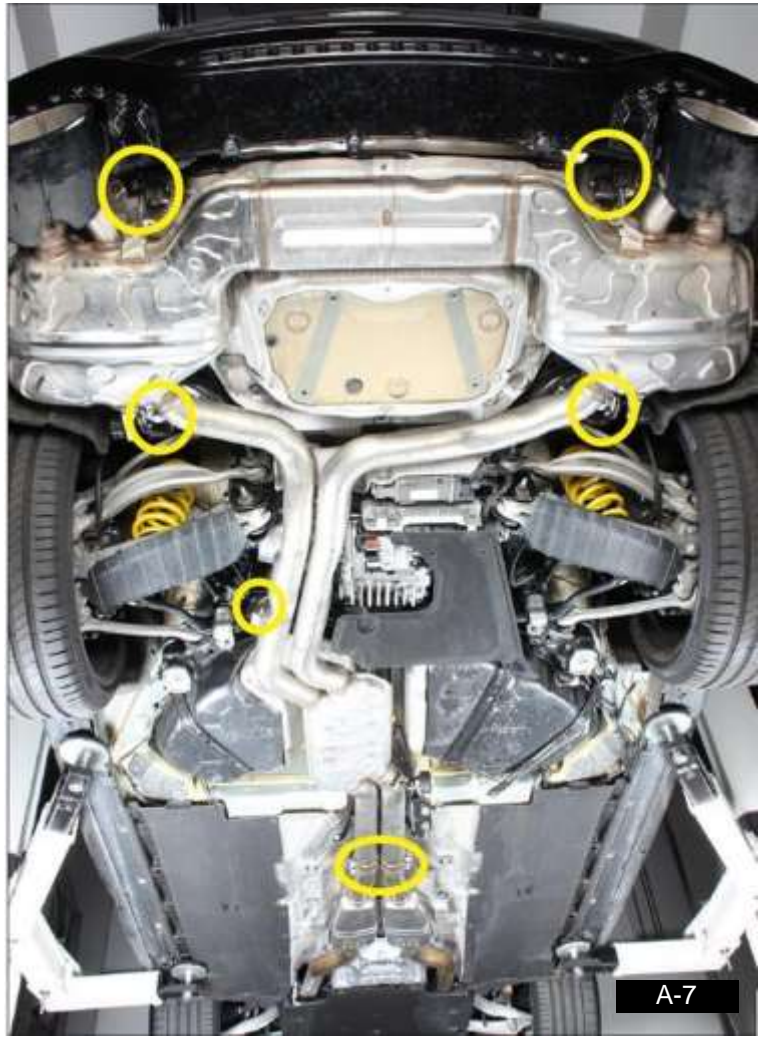
A-5
Unplug the factory valve motor and wrapped with tapes and zip tied under the car
- The wiring harness have locking clips. Please pull or press them according to the factory service manual.



A-6
Loose the factory exhaust clamps and remove the factory exhaust hanger and bracket and remove the factory cat-back system then

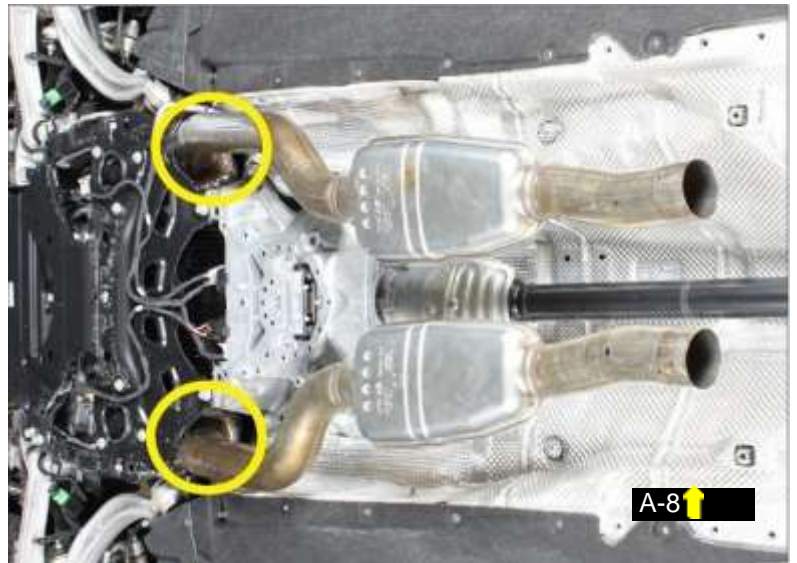
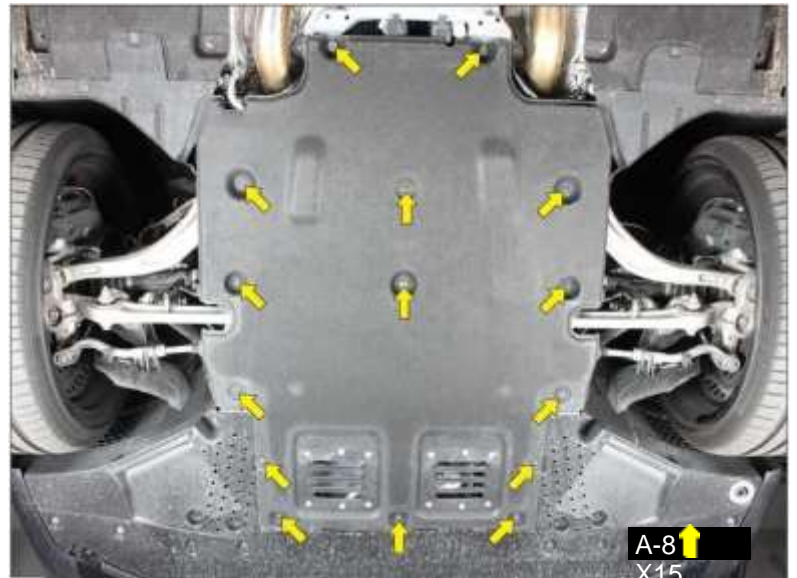


A-7 illustrations as follows



A-8 Remove the front under cover and prepare for take off the front pipes

- After the screws are removed, place them neatly and in an organized manner to avoid confusion when reinstalling them later.



STEP A Removal Stock Exhaust System

A-9 Remove the following order: Heat shield, Hanger Bracket and Nuts

- After the screws are removed, place them neatly and in an organized manner to avoid confusion when reinstalling them later.



A-10 Remove the engine cover

- The installer will make contact with the exterior of the car. Please use protection padding or other protective measures such as a car cover or gloves to avoid paint scratches or damage.



A-11 Unscrew and remove the heat shield bracket

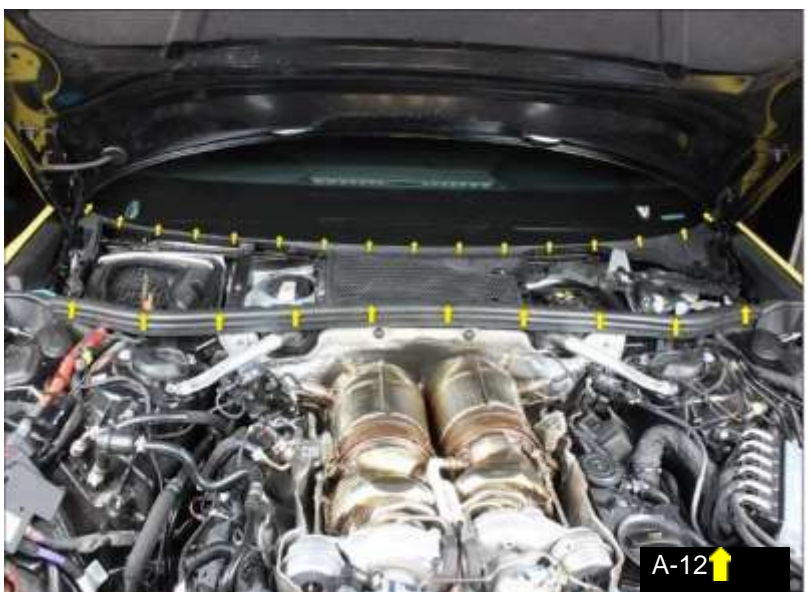
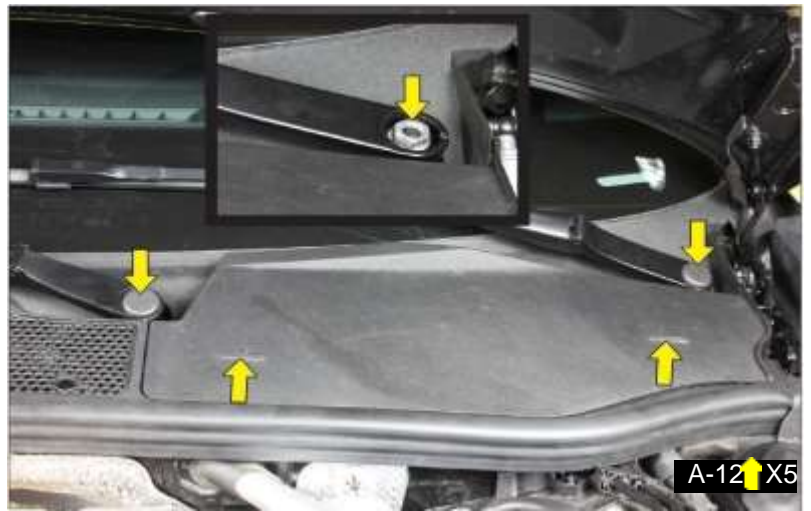
- After the screws are removed, place them neatly and in an organized manner to avoid confusion when reinstalling them later.



A-12 Remove the following orders: plastic panels, windshield wipers and the sealing

- After the screws are removed, place them neatly and in an organized manner to avoid confusion when reinstalling them later.

- The installer will make contact with the exterior of the car. Please use protection padding or other protective measures such as a car cover or gloves to avoid paint scratches or damage.



A-13 Remove the following orders: engine bay supports

- After the screws are removed, place them neatly and in an organized manner to avoid confusion when reinstalling them later.

- The installer will make contact with the exterior of the car. Please use protection padding or other protective measures such as a car cover or gloves to avoid paint scratches or damage.

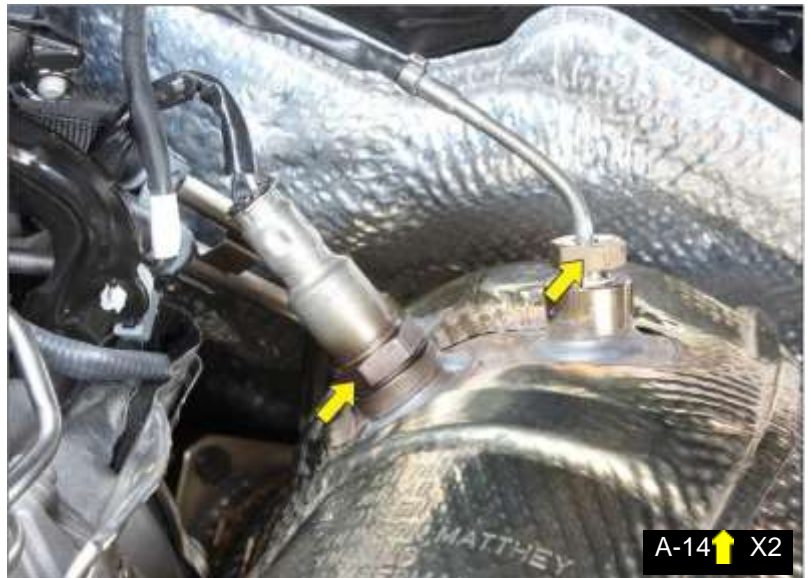


A-14 Remove the OPF/GPF sensors and the O2 sensors

- The wiring harness have locking clips. Please pull or press them according to the factory service manual.

- After the screws are removed, place them neatly and in an organized manner to avoid confusion when reinstalling them later.

- The installer will make contact with the exterior of the car. Please use protection padding or other protective measures such as a car cover or gloves to avoid paint scratches or damage.



A-15 Loose and remove the downpipes clamps, the downpipe can be removed



- After the screws are removed, place them neatly and in an organized manner to avoid confusion when reinstalling them later.



- The installer will make contact with the exterior of the car. Please use protection padding or other protective measures such as a car cover or gloves to avoid paint scratches or damage.

A-16 Remove the longer OPF/GPF sensor tube from the lower head section and install it to the two OPF/GPF sensors as shown in the figure

- After the screws are removed, place them neatly and in an organized manner to avoid confusion when reinstalling them later.

- The installer will make contact with the exterior of the car. Please use protection padding or other protective measures such as a car cover or gloves to avoid paint scratches or damage.

A-17 reinstall the OPF/GPF sensor back to the position.



A-16-1



A-16-2



A-17

STEP B Installing iPE exhaust system

- Steps to installation of iPE Exhaust

B-1

Place the iPE catalytic converter lugs and muffler into position.

Tied down the clamps and also put back the factory O2 sensor

- Secure the screw properly
- Using the factory Gasket

B-2

Install the iPE muffler in position.

B-2

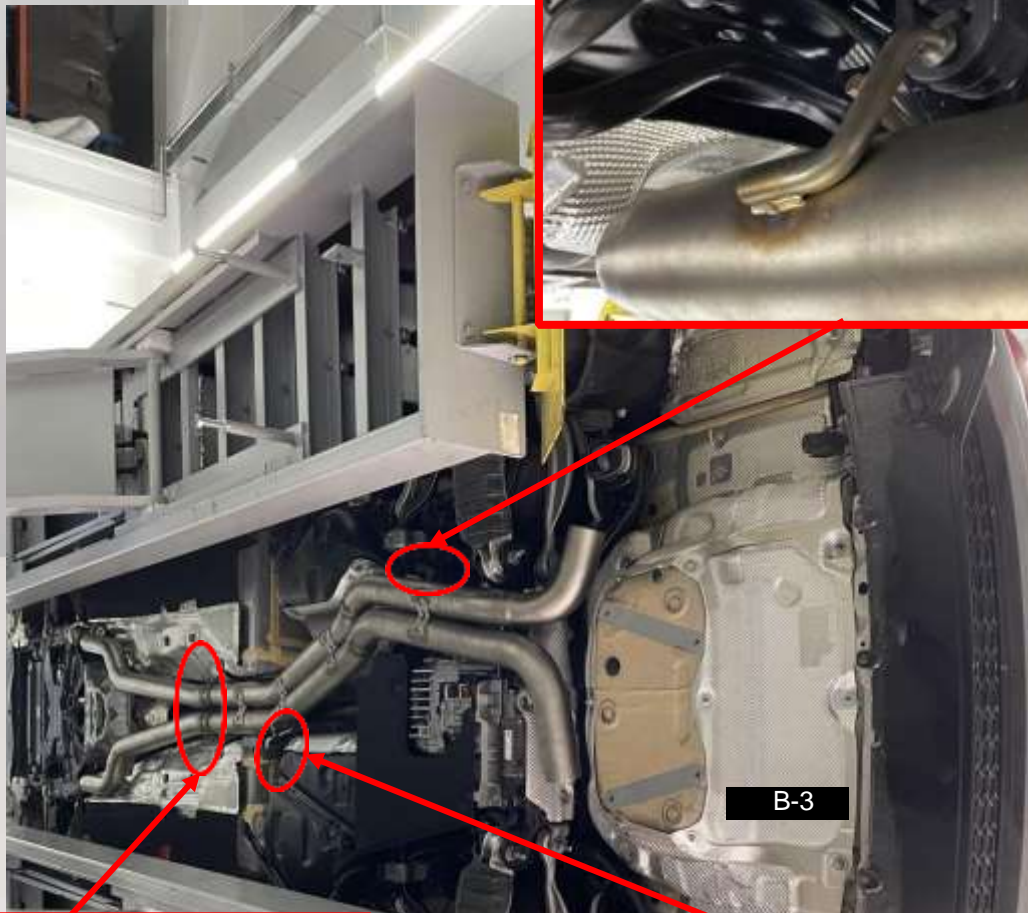
Install the Front pipe section and pre tied the hanger and brackets back in position



B-3

Installed the mid pipe back on the car and measure 12mm in between the exhaust and the frame.

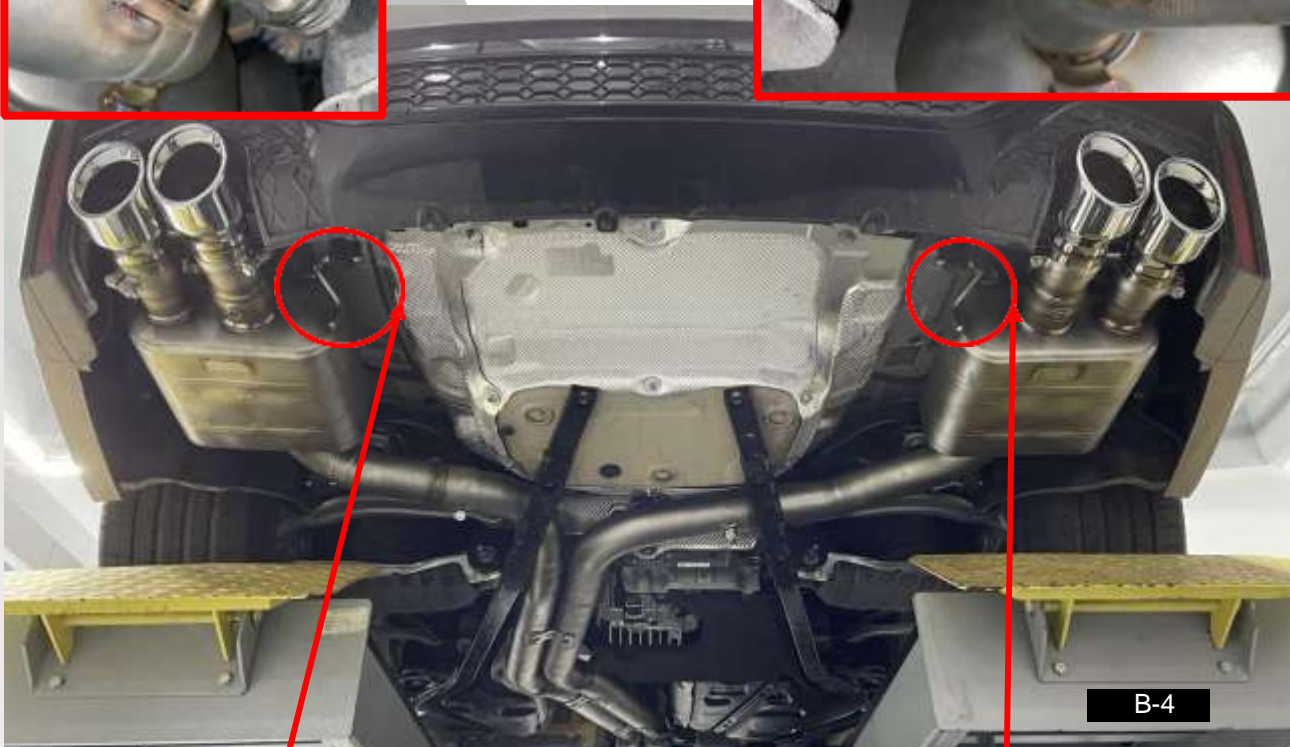
- Using factory exhaust clamps



B-4

Installed the catback system back on the car and tie down the clamps and exhaust hangers. Put back the frame supports and the undercover.

- Using factory exhaust clamps
- Adjust the tips to the position



B-5

Installed the vacuum pump and the solenoid

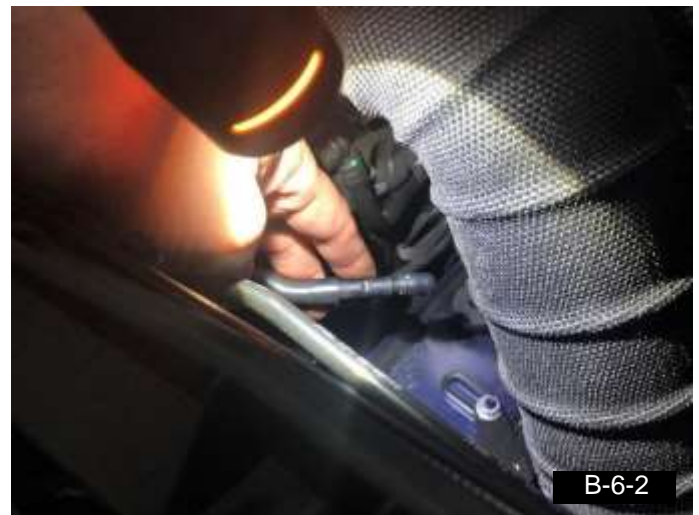


B-6

Remove the Vacuum hose and reconnect to the vacuum valve; Connect to the vacuum pump and use the 3-way adapter to connect to two valves



B-6-1



B-6-2

B-7

Connect the valve system with the control box in the driver side seat through the fire wall by blue and black wires.



B-7-1



B-7-2

B-8: Measure ACC positive electricity connection to the fuse box by red wire. Connected negative to the ground by black wire.



- We offer a 1 Year limited warranty with unlimited mileage. The warranty is void if the defect is caused by customer's abuse, negligence, or mishandling. Customers are responsible for the shipping costs for warranty claims. Labor costs and inconvenience caused are not included in our warranty claim. Please contact the original dealer for warranty details.
- While Innotech Performance Exhaust systems undergo long term product testing for each of our product, Innotech Performance Exhaust (iPE) does not hold any responsibility for any engine, emission and any other exhaust related engine or drivetrain failure. This is because of the different types of condition and equipment that each car carries and owner operation. Our systems are designed for "off-road" use only.

- With our exhaust system, you will learn to enjoy your car again with our patented sound waves and the performance gain in a exhaust system. With proper use our exhaust system will last the lifetime of your vehicle.
- Due to construction of the exhaust system, there will be a break in period for our muffler to settle in. This process is approximated around 300 miles or about 500 km. After this period, the sound level and tone will settle to its normal level.
- Periodic cleaning is needed to keep the appearance of your exhaust tips. Especially in area where road salt or sand is used. Extra care in cleaning should be taken if your vehicle is driven in these region. Use soap and water mix to do lighter cleaning and car wax for harsher cleaning only if necessary.