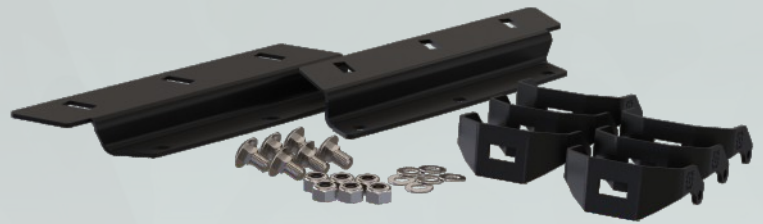


2021 + BRONCO 4BANGER FOG LIGHT KIT INSTALL GUIDE

WARNING: By reading this document, you agree it is only to be used as an educational guide. Morimoto Lighting nor its dealers make guarantees on any finished results, nor are they to be held responsible for any damage, misuse, or personal injuries. If you are unable to clearly understand and adapt the information below, professional installation is recommended.

PACKAGE CONTENTS

- 1x BAF069L Driver Side Bracket
- 1x BAF069R Passenger Side Bracket
- 2x Long U-Brackets
- 2x Medium U-Brackets
- 2x Short U-Brackets
- 12x M6 Torx Head Bolts
- 6x SS Square Shoulder Carriage Bolts
- 6x SS Nylon Lock Nuts
- 1x BAF024H Relay Harness (Optional)
- 3x Sets 4Banger Pods (Optional)



TOOLS REQUIRED (NOT INCLUDED)

- TP40 Torx-Plus Socket or L-Key
- T30 Torx Socket or L-Key
- 17mm Combination Wrench
- 10mm Socket or Wrench
- Flat Head Screwdriver or Trim Removal Tool
- Zip Ties



INSTALLATION PROCESS

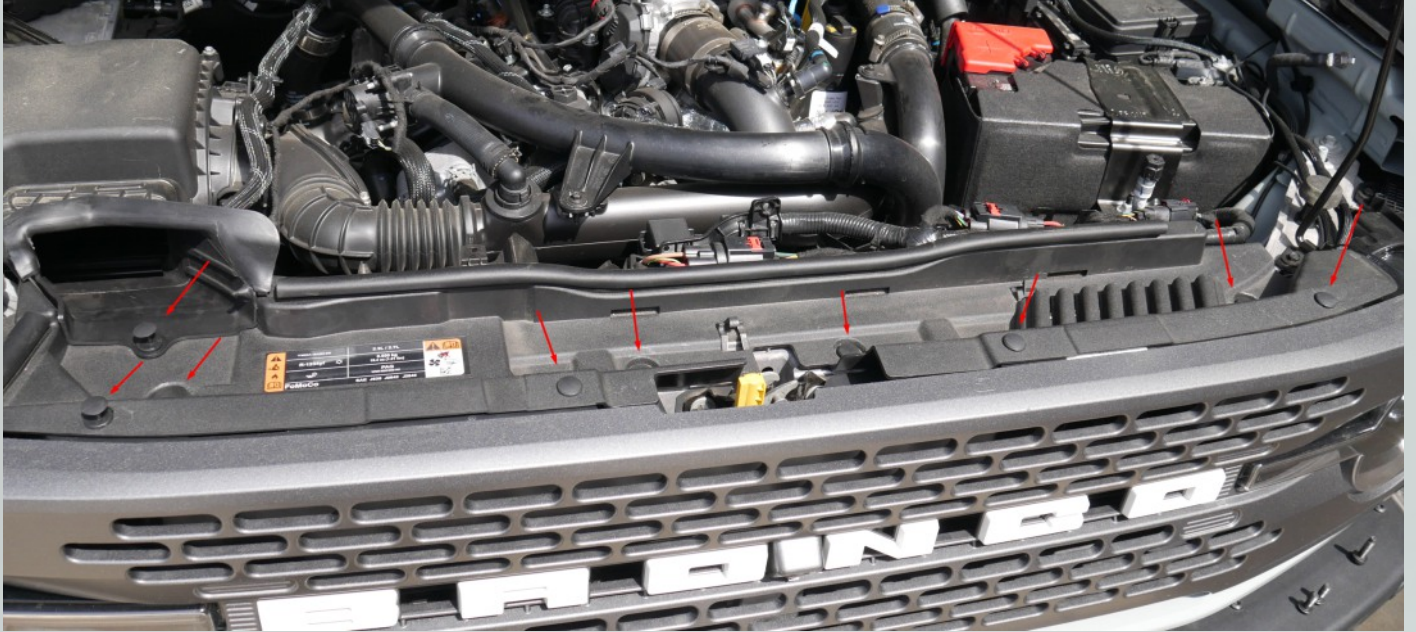
1. Open the hood and remove the negative (-) battery terminal from the battery. This will make sure no power is present when installing the relay harness



2. Using a 10mm socket or wrench, loosen the nut holding the negative battery terminal to the battery. Note: The nut only needs to be loosened, not removed. Remove the battery terminal and set safely aside



3. Using a flat head screwdriver or panel remove tool, remove the 9 plastic clips holding the grille cover. To remove the clips, first pry up on the button within the clip to release the lock. With the lock released, pull the clip from the hole by prying the bottom portion until removed.



4. Remove the air box ducting that connects to the grille cover.



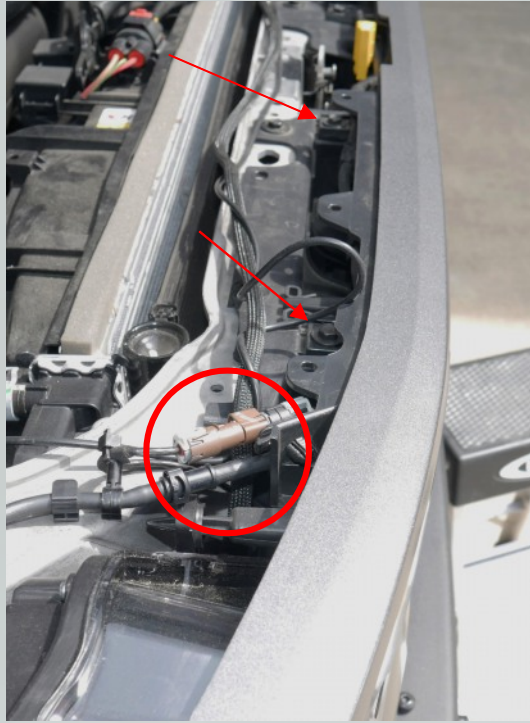
5. Remove the grille cover and set aside. This will give access for us to route the relay harness wiring



6. Begin laying out the harness for the pods. Extend the cables to their general location checking for areas along the body to route the cables. The shorter side of the harness should be routed to the side closest to the battery. In this case, the short end should run to the driver's side. The longer end of the harness should be routed to the passenger side of the vehicle.

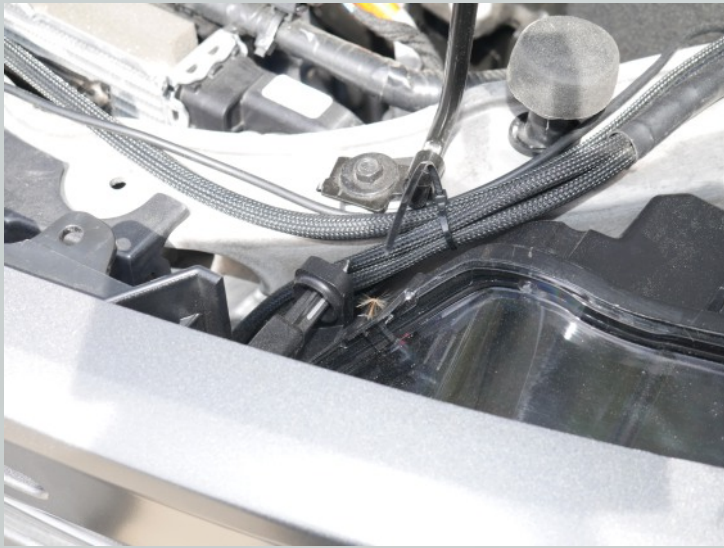


7. Though not necessary, the grille can be removed to increase access to the front for routing the harness. To remove the grill, remove the (4) 10mm bolts located at the top. Disconnect the front camera and washer line, located on the passenger side near the headlight. Be careful to check that all wires and lines are clear and disconnected, pull the grille forward and away from the Bronco. Set aside.



8. Using the space near the headlights, fish the Deutsch connector ends of the harness down through to the front bumper.





8. Optional: Bumper end cap can be removed for additional space during installation. To remove, pull push pins out of the plastic cover surrounding the tow hook.



9. To remove end cap, use IP40 (Torx Plus) to remove these (5) screws.



10. Begin assembling the pods and brackets. Fit the square shoulder carriage bolts as shown. Fit the Torx T30 screws but do not fully tighten yet.



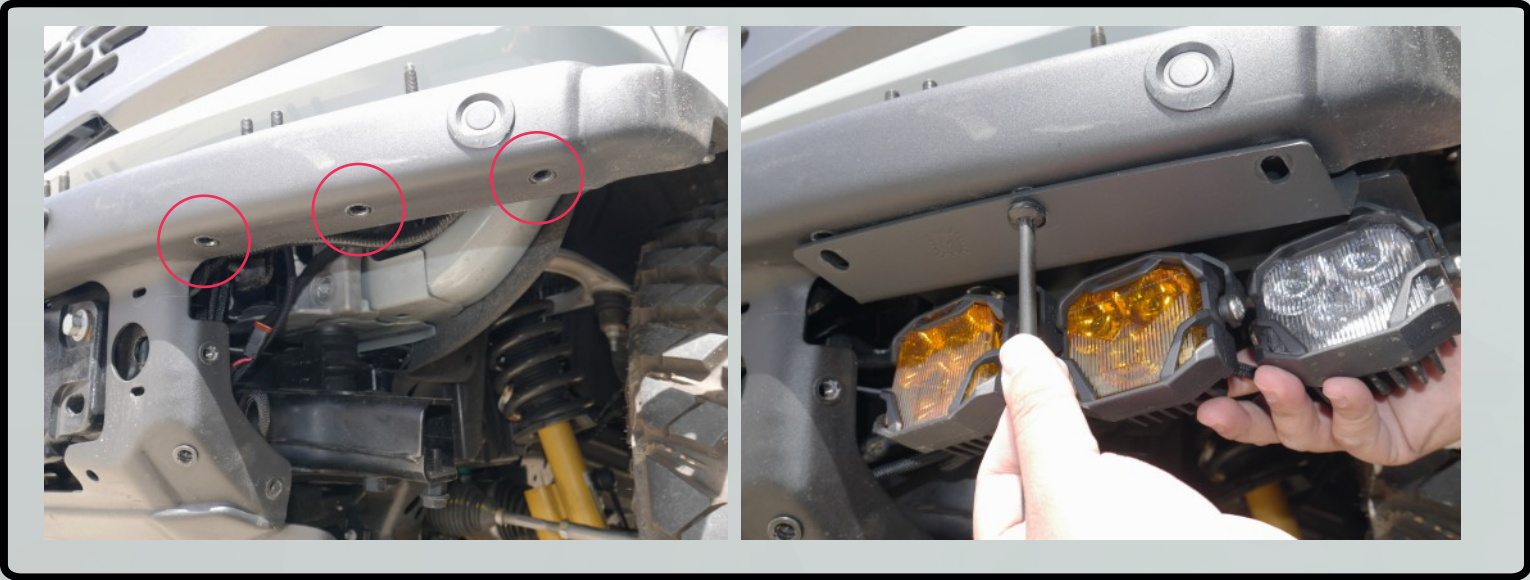
NOTE: Pod should be mounted in the same direction as the slots (bracket should be close to parallel)



Pods should be mounted from outside-in, tightening the pod adjustment screws after installed (access becomes tight when all pods are mounted)



11. Using a Tp40 (Torx Plus) socket or L-Key, remove the 3 bolts on the bumper and reinstall through assembled 4Banger bracket.



12. If the bumper caps were removed, they can be reinstalled in the reverse process of removal.



13. Mount the relay to the engine bay. Connect ground to the body and power to one of the positive battery lugs.

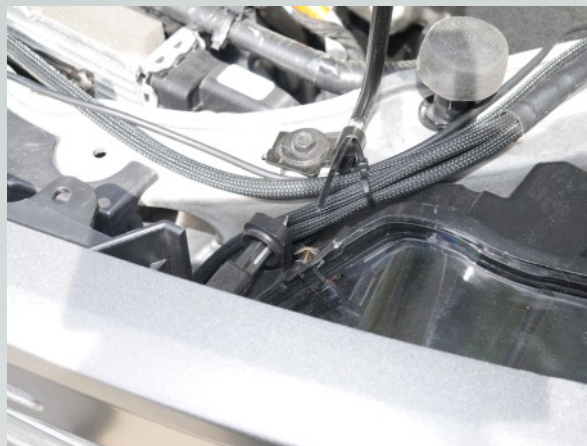


14. Connect the harness's trigger wire to the upfitter switch using the appropriate wire (which can be found in the owner's manual)



15. Reconnect the negative battery terminal.

16. Tidy up the harness using zip ties. Check that there is no rubbing or interference with any moving parts.



-END-