



1.877.287.8634

INSTALLATION INSTRUCTIONS

IMPORTANT NOTICE: Be sure to inspect and test fit product before having it coated or painted. Ranch Hand will not be responsible for the cost of the coating if any problems with fit or finish are not noted and addressed beforehand.

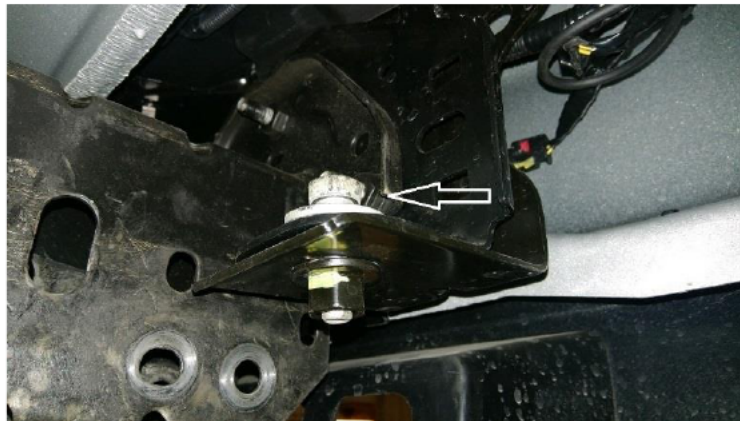
2019-up GMC 1500 GRILL GUARD

PART # GGG19HBL1 / GGG19HBL1C (Camera Cut)

***** FOR VEHICLES WITH SENSORS, YOU WILL NEED TO USE PSG19HBL1 *****

***** TRUCKS WITH DIESEL MOTOR WILL HAVE TO CUT THE DRIVER SIDE TOW HOOK BOLT OFF *****

1. On models with tow hooks, loosen the 18mm bumper bolt, driver side only. This bolt is in the way of the tow hook bolt.



2. (*Diesel*) Remove the bracket that attaches the air dam to the frame. Also, remove the rectangle tubing from the frame.



----- **WARNING** -----

Special care should be exercised in the handling, storage and installation of Ranch Hand equipment. The actual weight of each piece of equipment will vary depending on style and model. The weight of the equipment is sufficient in volume to warrant special care, assistance and in some instances, the use of mechanical equipment during the transfer and installation of the equipment. Do not assume a position directly under the equipment during installation. Be sure the equipment has been connected and stabilized during installation to prevent falling or shifting of positions. Periodically check tightness of bolts to make sure they are tight, and unlikely to fail.
Rev. 2021

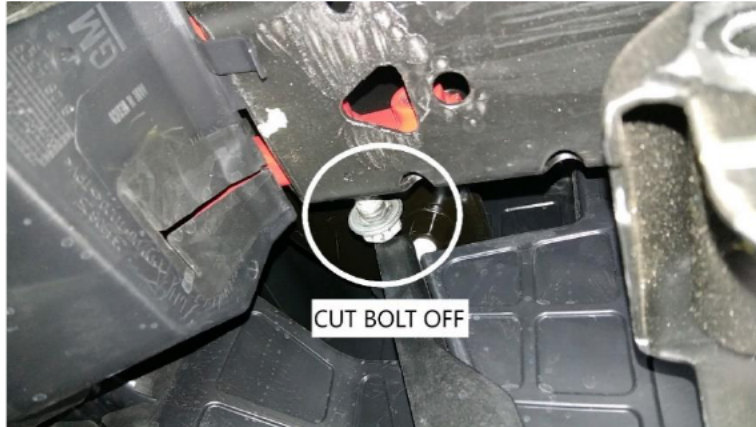


1.877.287.8634

INSTALLATION INSTRUCTIONS

IMPORTANT NOTICE: Be sure to inspect and test fit product before having it coated or painted. Ranch Hand will not be responsible for the cost of the coating if any problems with fit or finish are not noted and addressed beforehand.

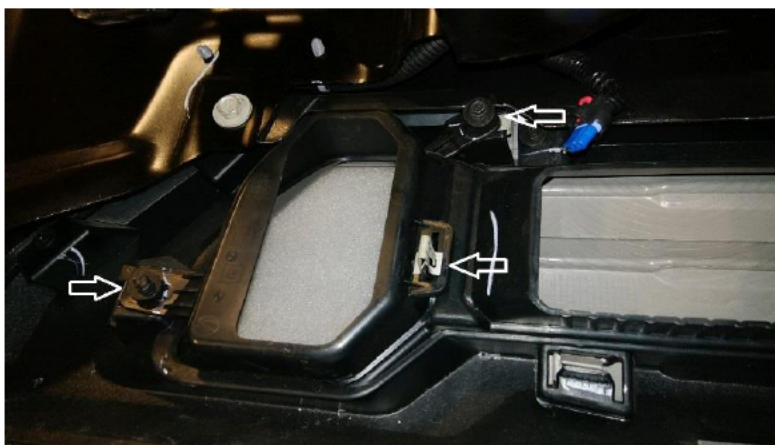
3. (*Diesel*) On the driver side, cut the front tow hooks bolt off. You will use a ½" x 4" bolt to reinstall the tow hook later.



4. Remove the tow hook along with the plastic cover around it.



5. Also remove the tow hook trim panel. It is mounted by two 7mm screws and one clip.



----- WARNING -----

Special care should be exercised in the handling, storage and installation of Ranch Hand equipment.

The actual weight of each piece of equipment will vary depending on style and model. The weight of the equipment is sufficient in volume to warrant special care, assistance and in some instances, the use of mechanical equipment during the transfer and installation of the equipment.

Do not assume a position directly under the equipment during installation. Be sure the equipment has been connected and stabilized during installation to prevent falling or shifting of positions.

Periodically check tightness of bolts to make sure they are tight, and unlikely to fail.

Rev. 2021



1.877.287.8634

INSTALLATION INSTRUCTIONS

IMPORTANT NOTICE: Be sure to inspect and test fit product before having it coated or painted. Ranch Hand will not be responsible for the cost of the coating if any problems with fit or finish are not noted and addressed beforehand.

6. (*Diesel*) If sensors are present, remove sensors and sensor bracket. Install pigtailed and grommet from PSG19HBL1 at this time.
7. Slide the 5" tab w/the bolts through the top holes of the frame.



8. From the back side, slide the mounting bracket through tow hook opening. Use 3/8" and 1/2" washers, lock washers and nuts to install.



----- **WARNING** -----

Special care should be exercised in the handling, storage and installation of Ranch Hand equipment.

The actual weight of each piece of equipment will vary depending on style and model. The weight of the equipment is sufficient in volume to warrant special care, assistance and in some instances, the use of mechanical equipment during the transfer and installation of the equipment.

Do not assume a position directly under the equipment during installation. Be sure the equipment has been connected and stabilized during installation to prevent falling or shifting of positions.

Periodically check tightness of bolts to make sure they are tight, and unlikely to fail.

Rev. 2021



1.877.287.8634

INSTALLATION INSTRUCTIONS

IMPORTANT NOTICE: Be sure to inspect and test fit product before having it coated or painted. Ranch Hand will not be responsible for the cost of the coating if any problems with fit or finish are not noted and addressed beforehand.

9. Reinstall the tow hooks. Use the factory tow hook bolts. *(Diesel)* Use $\frac{1}{2}$ " x 4" bolt. If there are no tow hooks present, use $\frac{1}{2}$ " bolts. Also, at this time tighten the 18mm bolt that was loosened in step 1.



10. Repeat steps on the passenger side. *(Diesel)* You will not need to cut tow hook bolt off.



11. Install the grill guard by using the $\frac{1}{2}$ " carriage bolts, washers and lock nuts provided.
12. Level grill guard and tighten all bolts and nuts. You may have to loosen the mounting bracket bolts to help with leveling.
13. *(Diesel)* Reinstall rectangle tubing and bracket that was removed in step 2.

----- **WARNING** -----

Special care should be exercised in the handling, storage and installation of Ranch Hand equipment. The actual weight of each piece of equipment will vary depending on style and model. The weight of the equipment is sufficient in volume to warrant special care, assistance and in some instances, the use of mechanical equipment during the transfer and installation of the equipment. Do not assume a position directly under the equipment during installation. Be sure the equipment has been connected and stabilized during installation to prevent falling or shifting of positions. Periodically check tightness of bolts to make sure they are tight, and unlikely to fail.
Rev. 2021