

**SHOP BY VEHICLE**

0

INSTALL INSTRUCTIONS FOR 75-5175

**PRINT**

BEFORE YOU START

This intake kit may not fit with the following Aftermarket Parts installed:

Body Lift or Lowering Kit

Custom Hood

Throttle Body Spacer / Upgrade

REQUIRED TOOLS

- 8mm, 10mm, 11mm Wrench/Socket
- 16mm Wrench
- T20 Torx (Supplied)
- Phillips Screwdriver
- Flat Blade Screwdriver

Please read the entire product guide before proceeding.

Ensure all parts are present.

If you are missing any of the components, call our customer support at (909) 947-0015.

Do not work on your vehicle while the engine is hot.

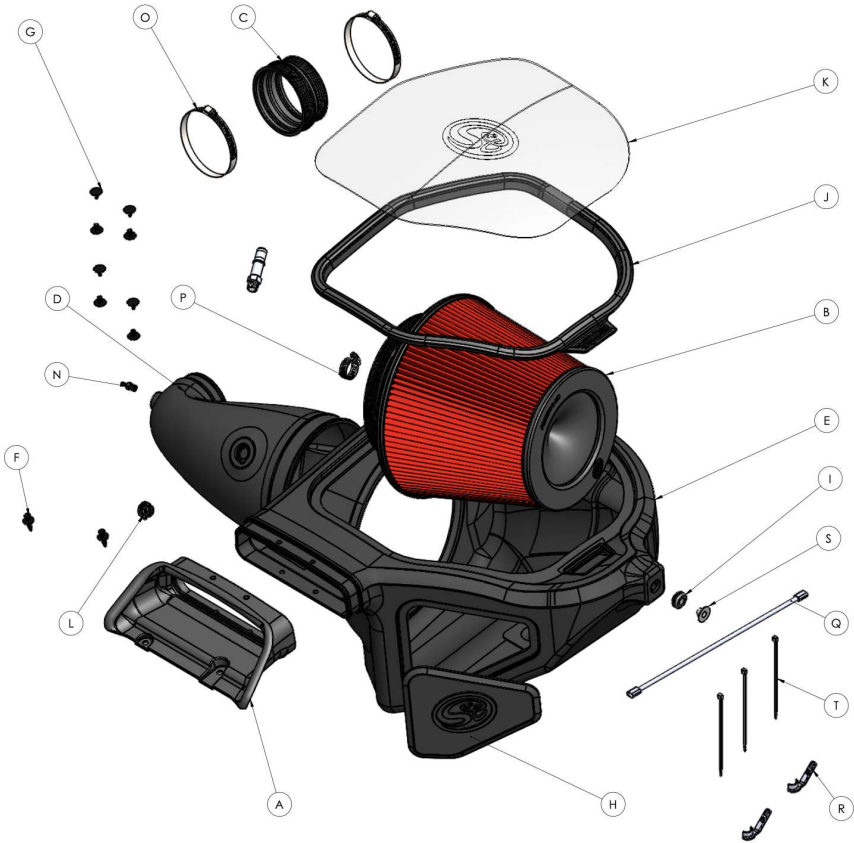
Make sure the engine is turned off and the vehicle is in Park or the Parking Brake is set.



Hi. Need any help?



PROPRIETARY AND CONFIDENTIAL
 THIS DOCUMENT IS UNCLASSIFIED EXCEPT WHERE SHOWN OTHERWISE AND IS THE SOLE PROPERTY
 OF S&B FILTERS, INC. ANY REPRODUCTION IN WHOLE OR IN PART WITHOUT THE WRITTEN PERMISSION OF S&B FILTERS, INC. IS PROHIBITED.



ITEM NO.	PART NUMBER	DESCRIPTION	QTY.
A	AI1758C-00	Front Inlet	1
B	KF-1095A	F150 Raptor R Filter Base : AI2878C-00 Top : AI2879C-00	1
C	AI2877C-00	F150 Raptor R Coupler	1
D	AL1423-00	AL1423-00	1
E	AL1423B-00	F150 Raptor R Box	1
F	AI1763-00	Plastic Rivet, 11/16 dia head, 1/4 dia x 7/8 long stem	2
G	AI1762-00	Rivet, Interlocking Shank, 1/4 dia x .50-.81" Grip, Blk Nylon	8
H	AI2875C-00	F150 Raptor R Silicone Box Seal	1
I	AI1563-00	Grommet, 1/2" ID x 1-1/16" OD, 7/16" Thk, 3/16" Panel	1
J	AI2876C-00	Snap-in Lid Seal	1
K	AI2874-00	F150 Raptor R Clear Lid	1
L	AI1948C-00	IAT Sensor Adapter, Silicone	1
M	AI1701-00	Fitting, Quick Connect to 3/8"NPT, Inj. Molded Block	1
N	AI1857-00	Barbed hose fitting, 1/8" NPT x 3/16"	1
O	AG1018-00	Hose Clamp, #64	2
P	AG1030-00	hose clamp, #12	1
Q	AI1969-00	IAT Sensor Harness Extension, 14" Long	1
R	AI2936-00	Disconnect Tool, 5/8" Quick Connect Fitting	2
S	AI2996-00	Bushing, Shoulder, .40 ID x .50" OD, 1.06" Flange OD, .43" Long, Al	1
T	AI1750-00	Cable Tie, 6" Long	3

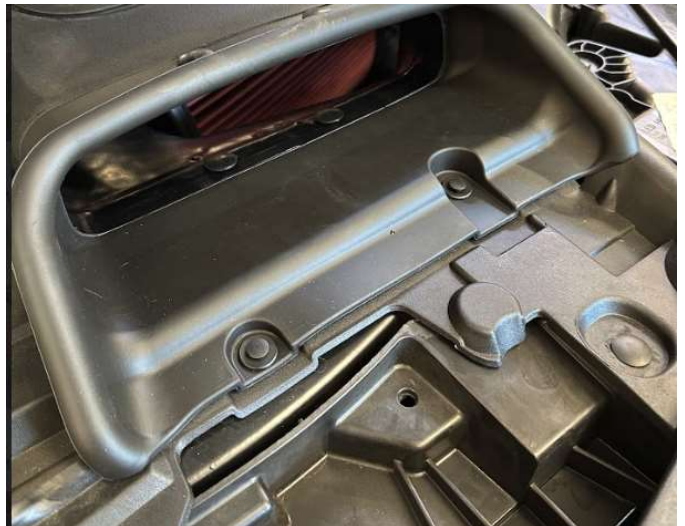
STEP 1

With the ignition switched off and the parking brake set, disconnect the negative battery cable on the driver's side.

IMPORTANT: Failure to disconnect the battery for a minimum of 2 hours may cause the Check Engine Light to illuminate upon completion of the installation or subsequent operation. **DO NOT SKIP THIS STEP!**

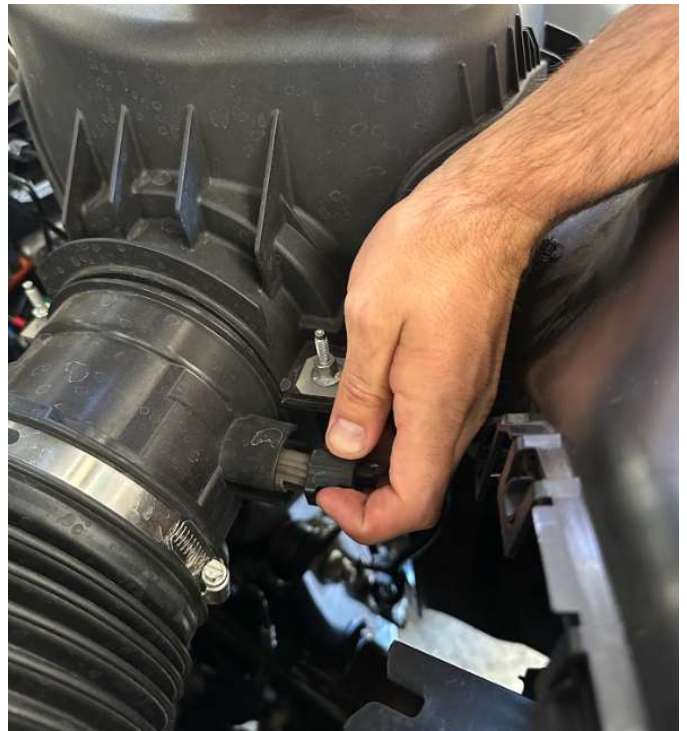
STEP 2

Remove the push rivets on the scoop with a flathead.

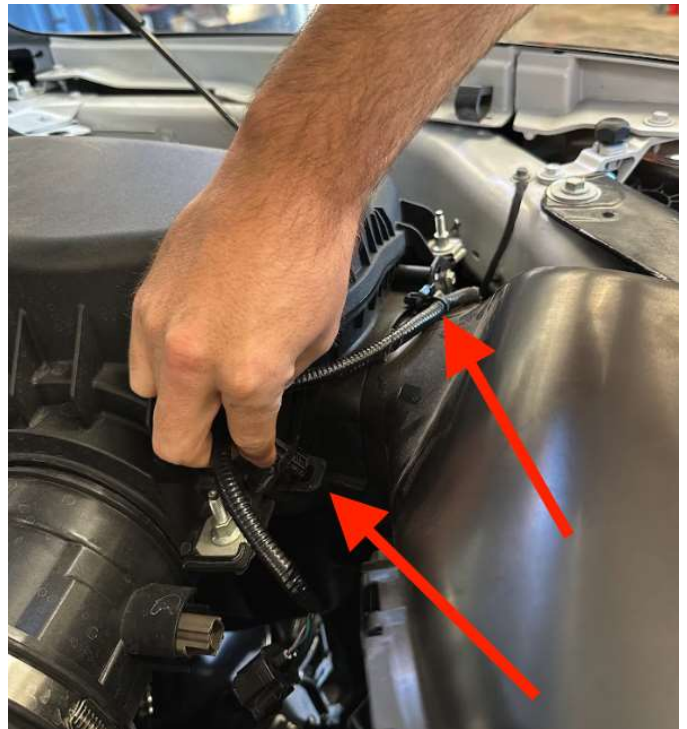


STEP 3

Disconnect the IAT sensor and the two christmas trees connecting the harness to the airbox.

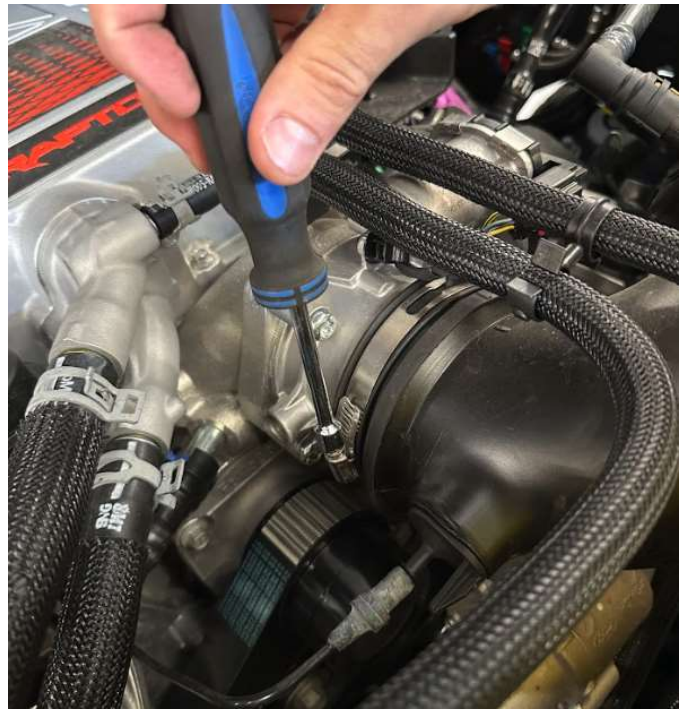


STEP 3B



STEP 4

Loosen the hose clamp at the throttle body.



STEP 5

Disconnect the push on barb located near the throttle body.



STEP 6

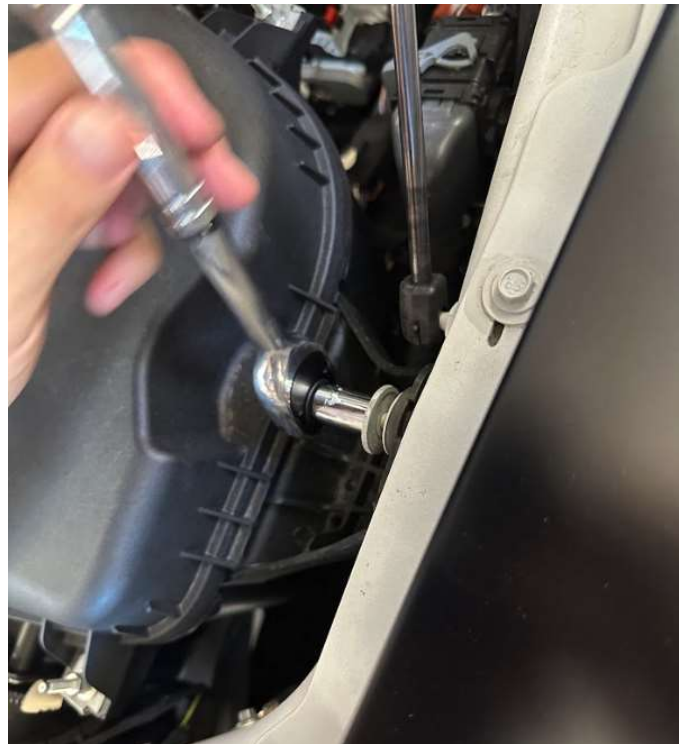
Disconnect the permanent Ford quick connect using the provided tools. For clarification on removing, please watch our youtube video starting at 2:15.

<https://www.youtube.com/watch?v=w31qbJunz6Y>



STEP 7

Remove the screw holding the stock intake to the vehicle.



STEP 8

Remove the stock intake from the vehicle.



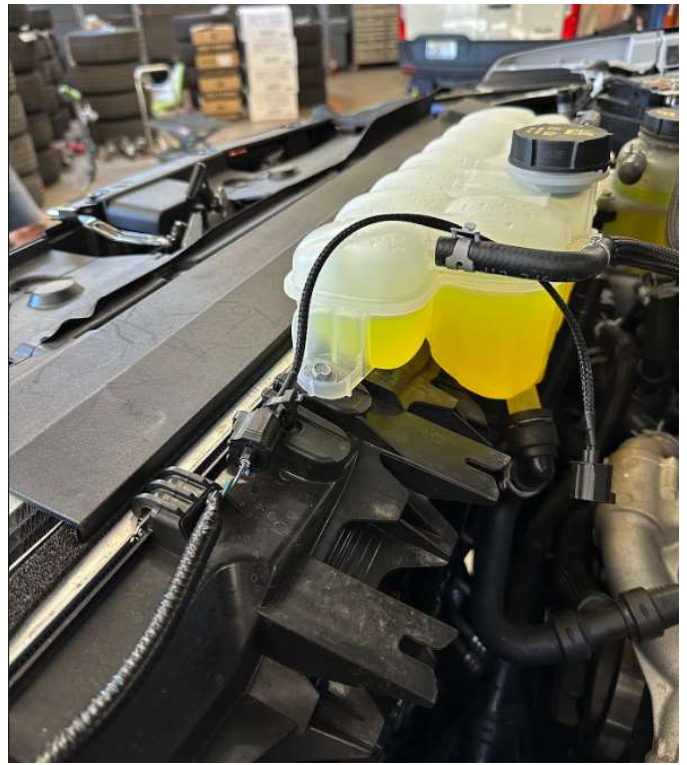
STEP 9

Remove the IAT sensor from the stock intake. To remove, use a screwdriver to pry under the lock as shown in the picture, then twist counterclockwise.

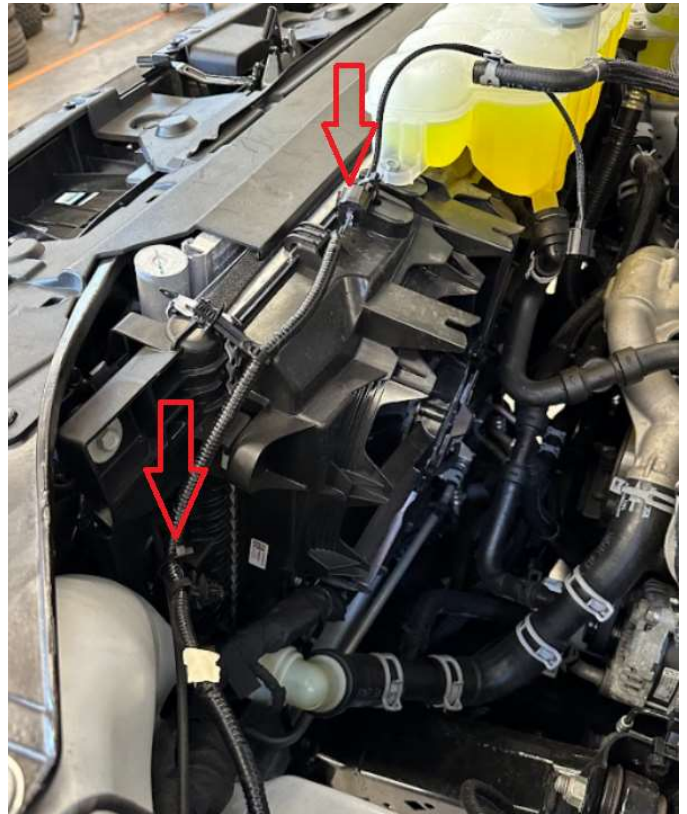


STEP 10

Clip in the IAT extension harness, then zip tie the harness to the side on the engine bay as shown in the picture.



STEP 10B



STEP 11

Install the IAT grommet onto the S&B intake tube.



STEP 12

Thread the small insert into the S&B intake tube. The insert is NPT so there will be some thread showing.



STEP 13

Install the bigger fitting into the tube. The insert is NPT so there will be some thread showing.



STEP 14

Unwrap the S&B filter and get it snapped into the airbox.



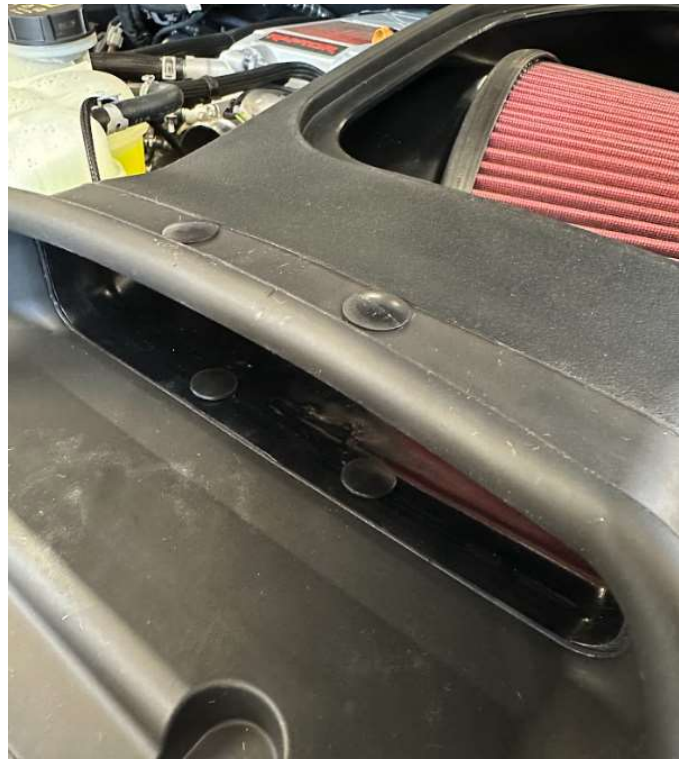
STEP 15

Install the grommet and washer onto the S&B airbox.



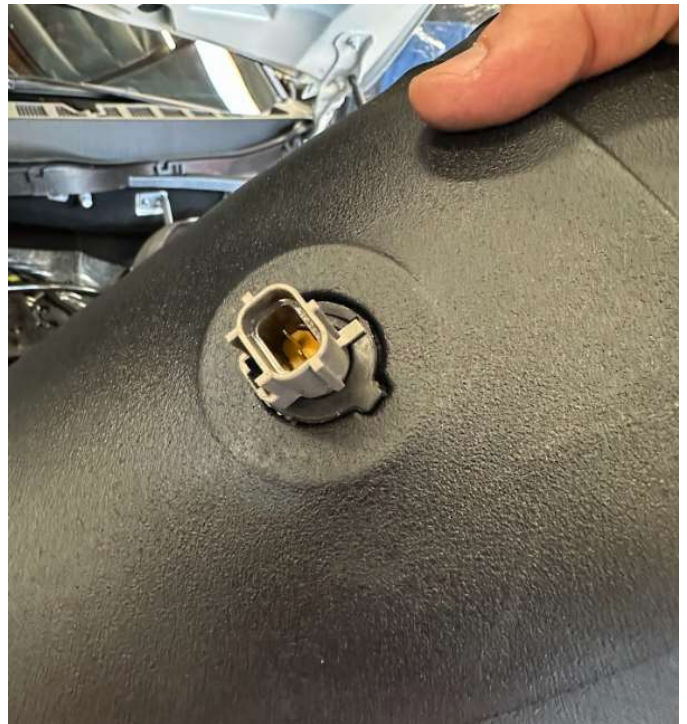
STEP 16

Install the scoop onto the S&B airbox using the provided push rivets.



STEP 17

Install the OEM IAT sensor into the S&B intake tube. Make sure the tab goes over the ramp as seen in the picture.



STEP 18

After the S&B tube is fully assembled, install the tube into the filter. Then install

the hose clamp and tighten down (not all the way).



STEP 19

Install the coupler and hose clamps onto the throttle body.



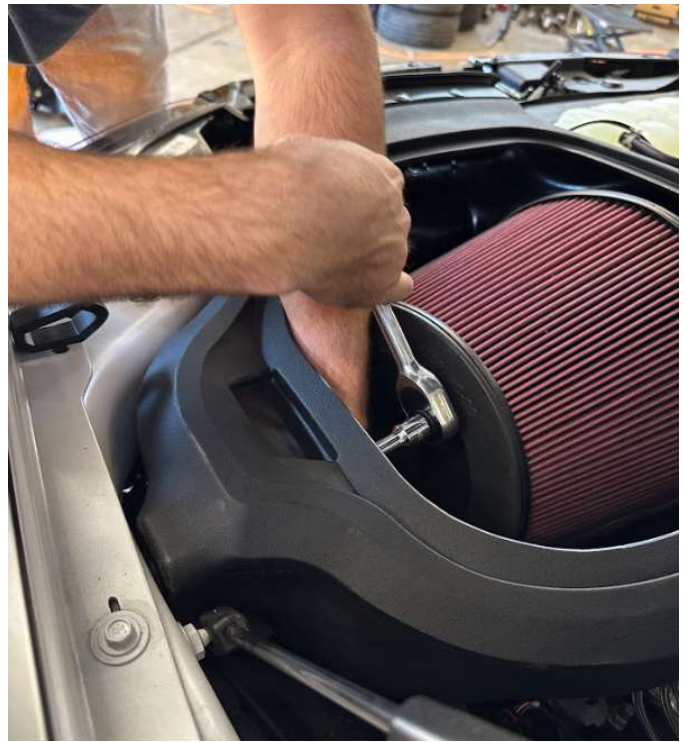
STEP 20

Drop the assembled airbox into the vehicle and install it onto the coupler at the throttle body. Then fully tighten down all the hose clamps.



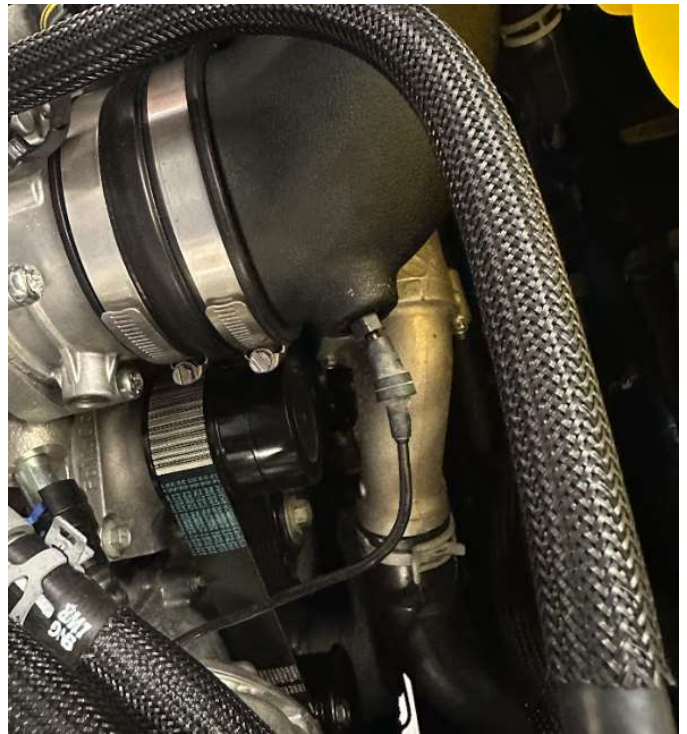
STEP 21

Reinstall the OEM bolt and fender washer. Then fully tighten down.



STEP 22

Reinstall the hose onto the S&B barb located on the intake tube.



STEP 23

Clip in the quick connect and the IAT sensor. Zip tie the IAT sensor harness to the coolant hose.



STEP 24

Remove the protective cover on the S&B clear lid, then install the lid into the lid seal.



STEP 24 (IMAGE 2)



STEP 25

Snap the assembled S&B clear lid onto the airbox.



STEP 26

Install the provided panel poppers into the scoop.





WIN A FREE TOOL TRAY

Sign-up below to receive the latest on product launches, insider tips and more. You'll also be entered into a tool tray giveaway where we choose a new winner every week.

Sign Up

SUPPORT

CONTACT US

PH: (909) 947-0015

FAQS

MILLION MILE WARRANTY

YOUR VEHICLE'S WARRANTY

UPGRADE GUARANTEE

SHIPPING & RETURNS

SAFETY DATA SHEETS

ABOUT US

WHY S&B

OUR TESTING PROCESS (ISO 5011 STANDARD)

FIND A DEALER

BECOME A DEALER

DEALER LOGIN

UNILATERAL PRICING POLICY

LET S&B USE YOUR VEHICLE



